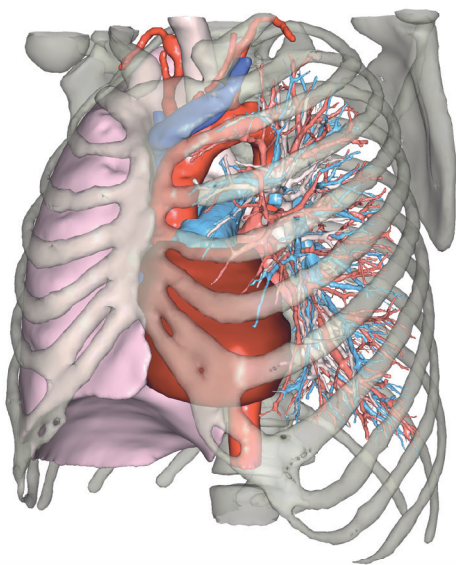




**VISIBLE PATIENT**

# THORACIC SURGERY



**1st online laboratory  
for 3D modelling  
of patient medical images**

**FINE ANALYSIS OF PATIENT ANATOMY**

highlighting anatomical variations

**INTERACTIVE VISUALIZATION**

of bronchi and pulmonary vessels

**SEGMENTECTOMY SIMULATION**

with volume computation

**ACCURATE AND TRANSPARENT**

**VISUALIZATION** of organs and pathologies

## Thoracoscopic right S9+10 segmentectomy

### AUTHORS

Gossot D, Seguin-Givelet A  
*J Vis Surg*, 2018; 4:181.

## Development of a precision multimodal surgical navigation system for lung robotic segmentectomy

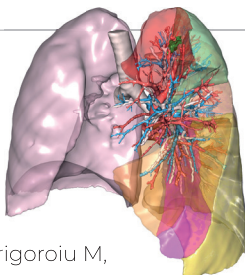
### AUTHORS

Baste JM, Soldea V, Lachkar S, Rinieri P, Sarsam M, Bottet B, and Peillon C  
*J Thorac Dis*. 2018 Apr; 10(10): S1195–S1204.

## Planning and marking for thoracoscopic anatomical segmentectomies

### AUTHORS

Seguin-Givelet A, Grigoriou M, Brian E, Gossot D  
*J Thorac Dis*, 2018 Apr; 10(10):1187-1194.



## PROCESS AND ORDER

1

Place your order on our portal

2

Upload CT-scan or MRI images of the patient

3

Visible Patient makes the 3D model for you

4

You plan the surgery with VP Planning



**VISIBLE PATIENT**  
As unique as you are.

[www.visiblepatient.com](http://www.visiblepatient.com)  
[contact@visiblepatient.com](mailto:contact@visiblepatient.com)